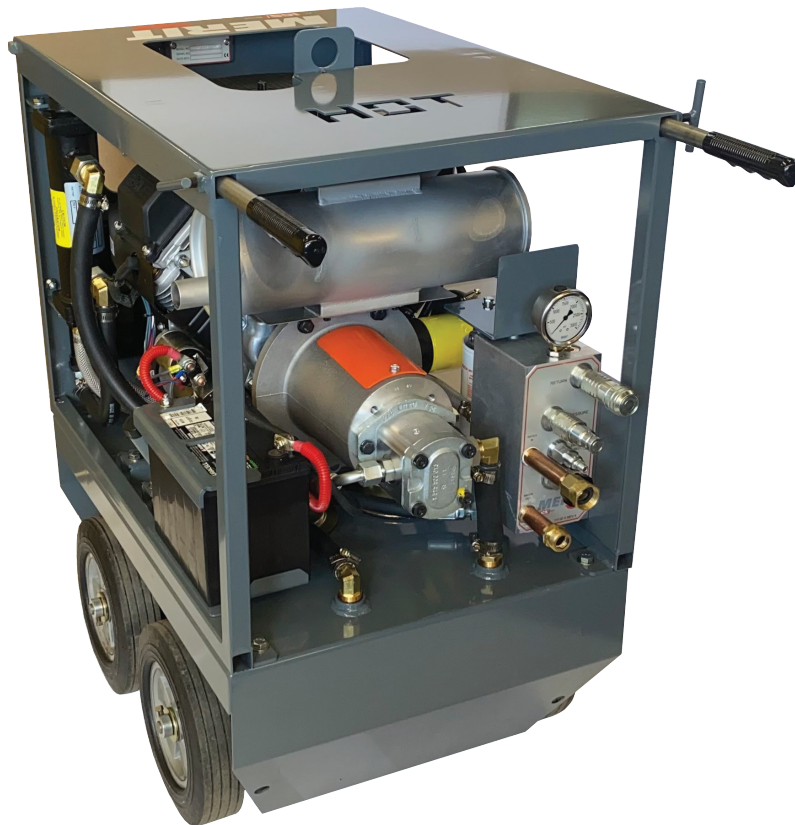


MERIT

AN **ICS** BRAND



Replacement Parts & Accessories List



M300-23G-HPP

Effective January 1, 2021

Hose specifications - available from your local industrial supplier**High pressure Lines:****Gates, 8M3K Mega3000**

22.5MPa (3250PSI) 1/2" (12.5MM) ISO 11237 R17

SAE 100R17

ISO 18752 type B_ Flame resistant MSHA 2G-11C

Return low pressure lines:**Continental, ContiTech.**

Insta-grip

Non-Conductive 3/4" 300 PSI W.P.

Flame resistant USMSHA 2G-IC-14C/33

Cooling water lines

1/2" Clear braided hose

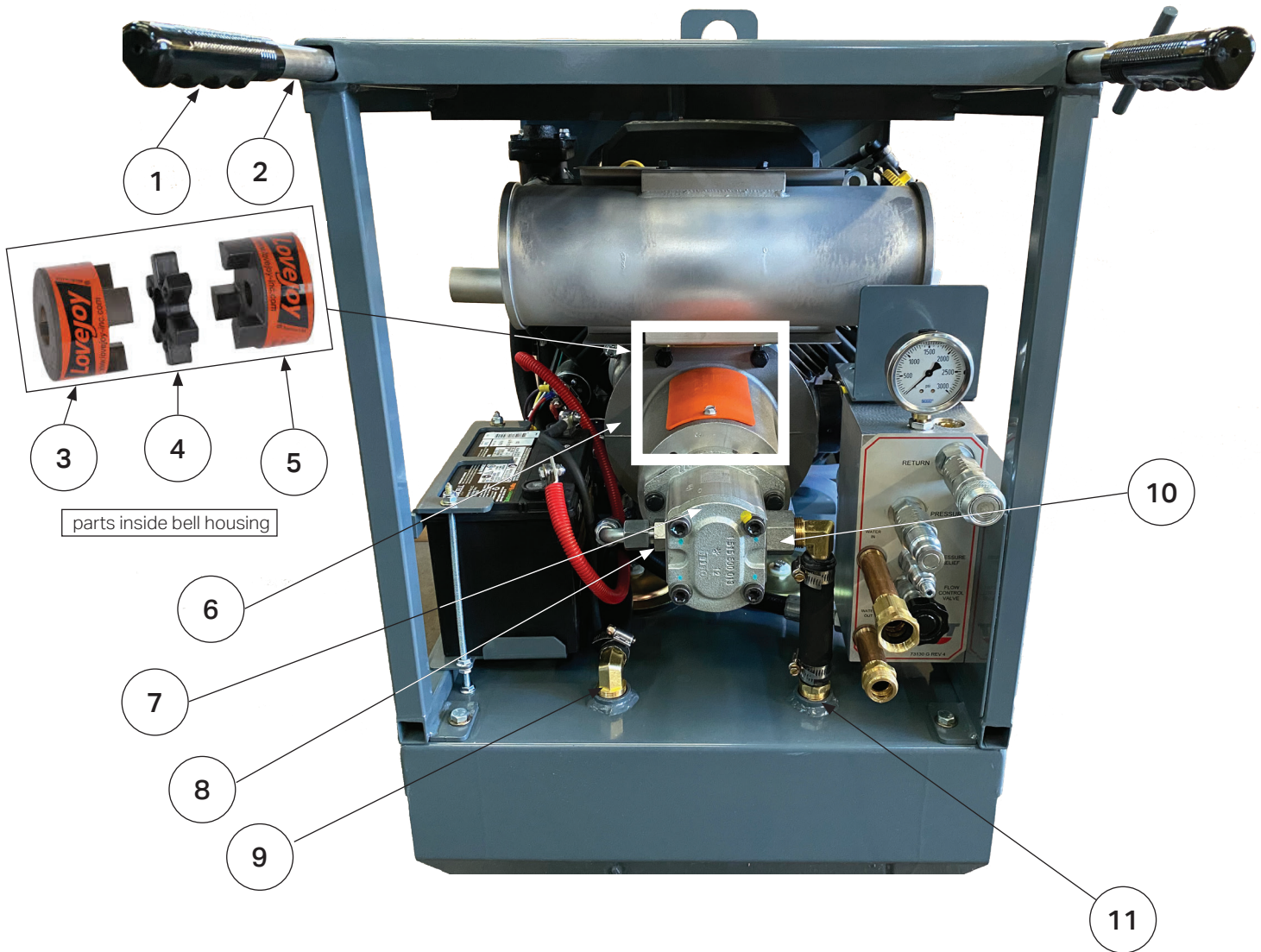
Tool Specifications	
Oil Flow*	12 gpm @ 2100 psi / 45 lpm @ 144 bar
Working Pressure	2300 psi / 158 bar
Hydraulic Oil Cooling	Oil to Air Radiator
	Oil to Water Heat Exchanger

*Set at factory

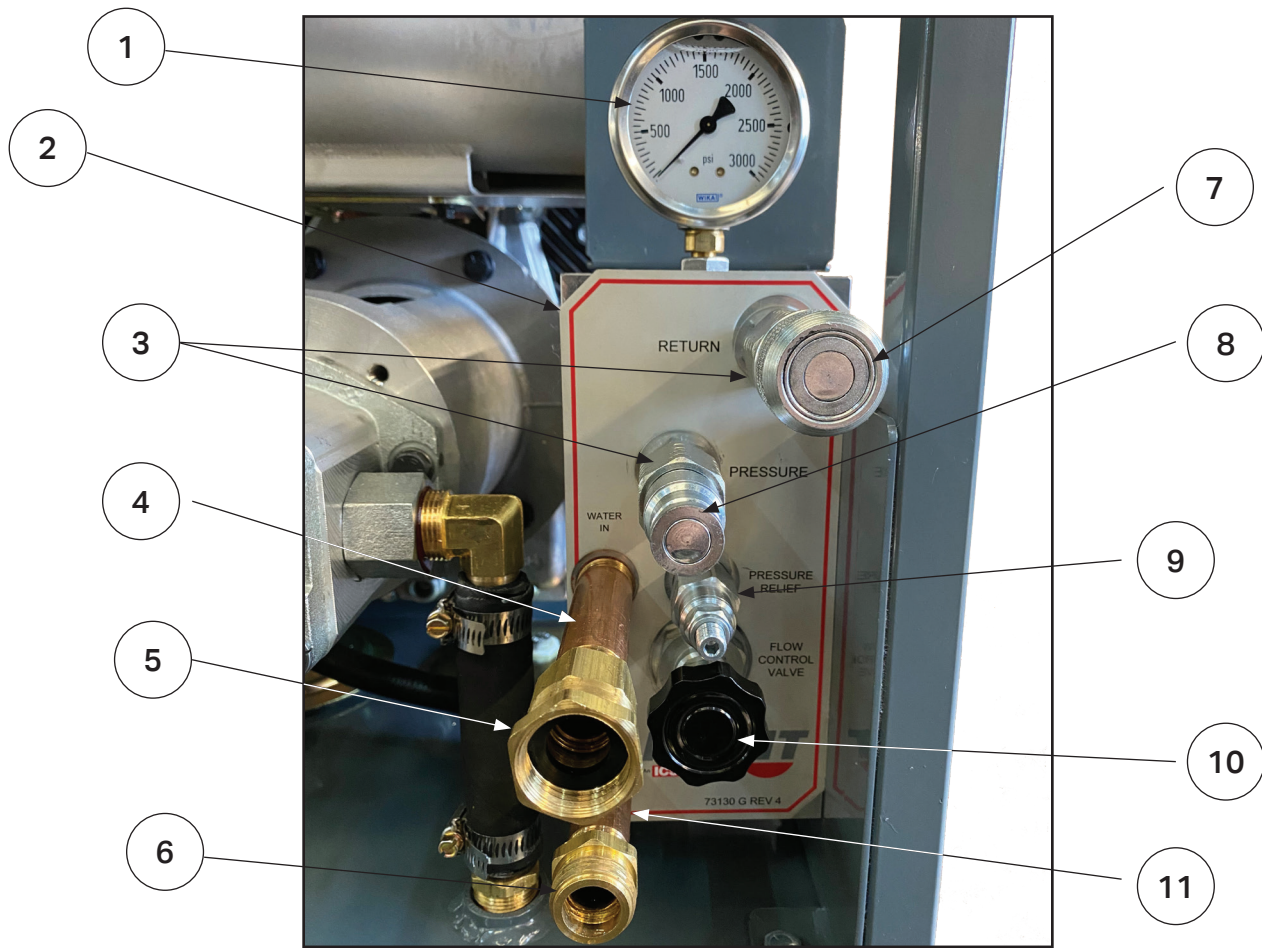
Unit Dimensions (uncrated)	
Weight	450 lbs. / 204 kg
Height	36" / 91.5 cm
Width	21" / 53.3 cm
Length	29" / 73.6 cm

Fluid Specifications	
Fuel Type	Unleaded Gasoline
Engine Oil	10W-30, 1.5 quarts / 1.4 L
Hydraulic Oil	AW32, Approximately 8 gallons / 30 L

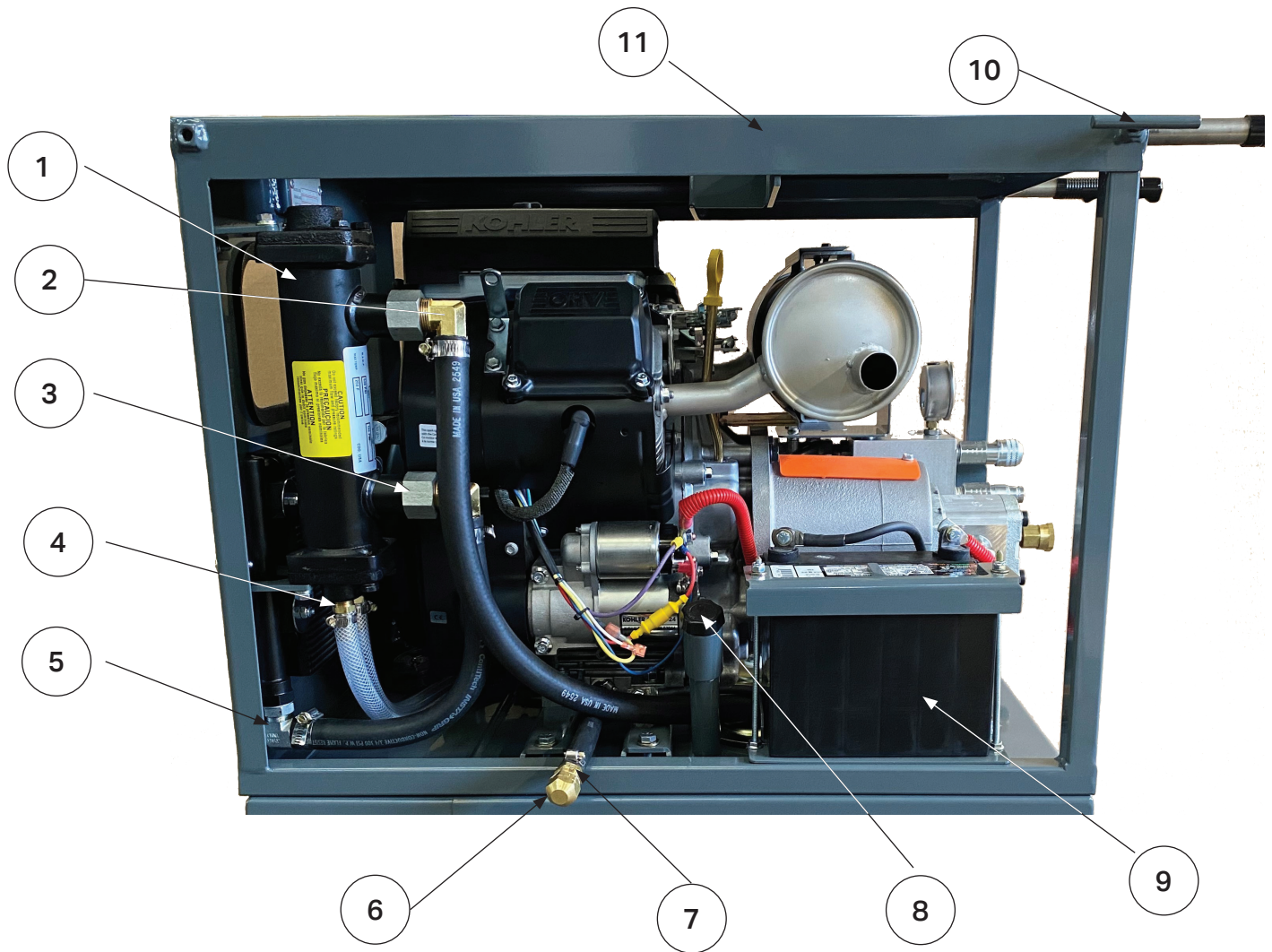
Engine Specifications	
Engine Manufacturer	Kohler, 23.5hp / 17.5 kW
Fuel Capacity	3.0 gallons / 11.35 L
Engine Max (working rpm)	3,600
Warranty	3 year, limited per manufacturer



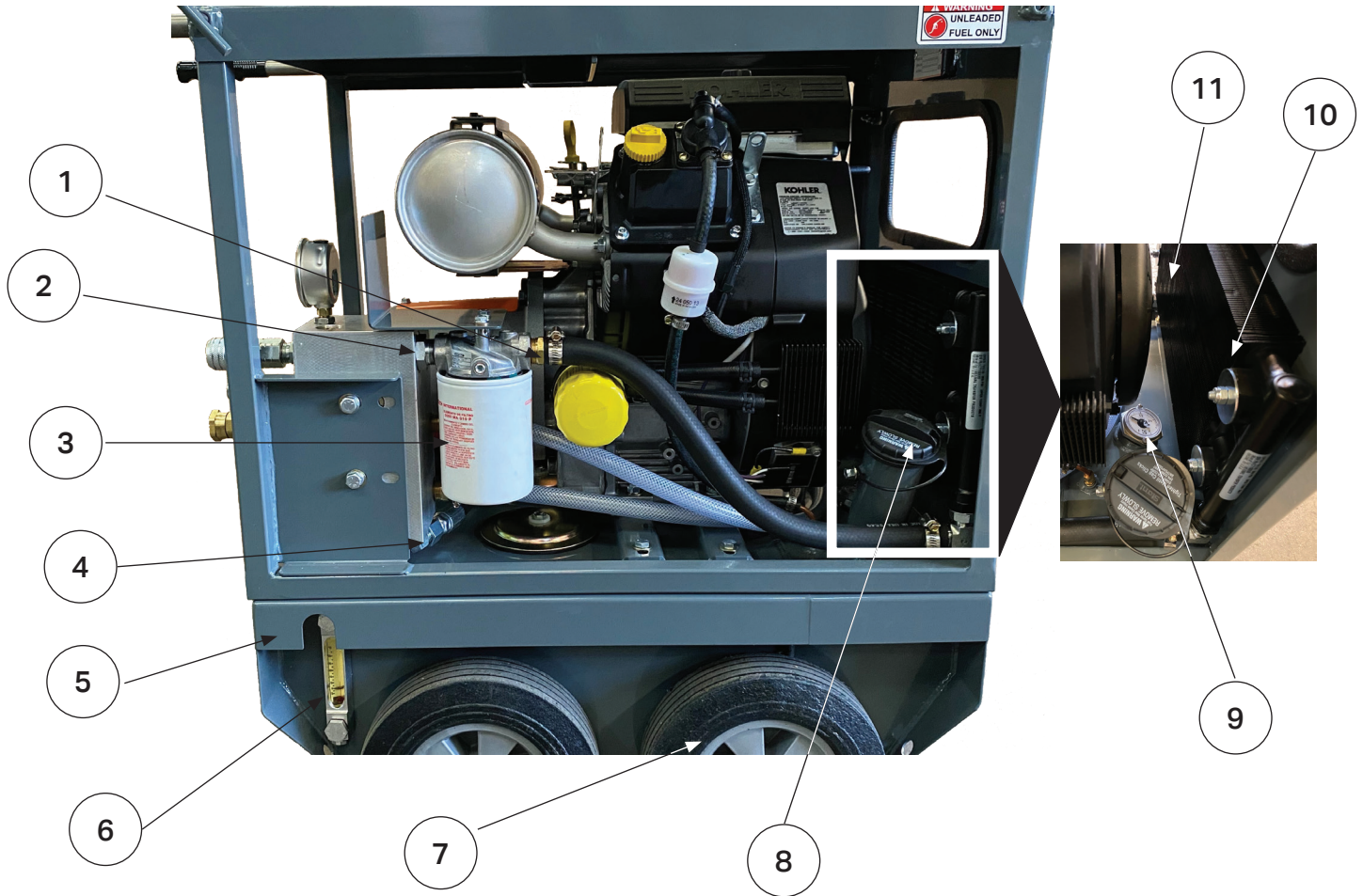
Item	Part Number	Qty per pack	Description	Qty Needed for view above
1	45161	1	RIBBED GRIP, 3/4in (grip only)	2
2	45106RP	1	HANDLEBAR, 3/4in X 27 in incl p/n 45161	2
3	490493	1	COUPLING, 1-7/16 BORE 5/32 KEY L-100	1
4	10445	1	SPIDER COUPLING, L-099/L-100	1
5	10444	1	COUPLING, 5/8 BORE 5/32 KEY L-100	1
6	10447	1	BELL HOUSING, MAGNALOY PUMP/MOTOR MOUNT	1
7	14307	1	REXROTH PUMP	1
8	source locally	N/A	MALE JIC 3/4-16 TO MALE O-RING 7/8-14 (6400-08-10-O)	1
9	source locally	N/A	3/4 BARB TO 3/4 MPT 90 DEGREE (BRASS) (12B-912)	2
10	source locally	N/A	MALE O-RING 1-1/16-12 TO FEMALE PIPE 3/4-14 (6405-12-12-O)	1
11	source locally	N/A	3/4 BARB TO 3/4 MPT STRAIGHT (BRASS) (12B-112)	1



Item	Part Number	Qty per pack	Description	Qty Needed for view above
1	23448	1	GAUGE, 1/4 3000 PSI	1
2	14896	1	ALUMINUM MANIFOLD Please purchase (1) decal p/n 73130. Fittings not included.	1
Not numbered	73130	1	ALUMINUM DECAL, 300 HPP	1
3	source locally	N/A	08 SAE MALE 3/4-16 TO 08 NPT MALE 1/2-14 (6401-08-08-O)	2
4	14855	1	THREADED PIPE NIPPLE, 1/2 PIPE X 4 L	1
5	14155	1	FITTING, GHF X 1/2 MPT GHF X 8FPT	1
6	14204	1	FITTING, GHM X 1/2 PIPE F GHM X 8FPT	1
7	source locally	N/A	NPT 1/2-14 TO FF SERIES 10FFS50 Hydraulic Quick Connect Hose Coupling (Socket)	1
8	source locally	N/A	NPT 1/2-14 TO FF SERIES 10FFP50 Hydraulic Quick Connect Hose Coupling (Plug)	1
9	14445	1	CARTRIDGE, PRESSURE RELIEF	1
10	14895	1	CARTRIDGE, FLOW CONTROL VALVE	1
11	14856	1	THREADED PIPE, 1/2 PIPE X 3 IN L	1



Item	Part Number	Qty per pack	Description	Qty Needed for view above
1	23444	1	THERMAL TRANSFER COOLER, WATER-OIL	1
2	source locally	N/A	3/4 Barb to 3/4 MPT_ 90 Degree (Brass) 12B-912	1
3	source locally	N/A	Male O-ring 1-1/16-12 to Female pipe 3/4-14 6405-12-12-O	2
4	source locally	N/A	1/2 barb to 3/8 Male NPT 08B-106	2
5	source locally	N/A	Beaded Stem size 12 to Male O-ring 10 7/8-14 4601-12-10	2
6	source locally	N/A	1/2 FPT cap 3129 X 8	1
7	source locally	N/A	1/2 barb to 1/2 male pipe 08B-108	1
8	17162	1	BREATHER CAP VENT, 3/4	1
9	source locally	N/A	UTILITY BATTERY Group U1L, 230 CCA at 0° F	1
10	15185RP	1	T-LOCK, 3/8-16	1
11	18246RP	1	TOP FRAME Made to order	1



Item	Part Number	Qty per pack	Description	Qty Needed for view above
1	source locally	N/A	3/4 Barb to 3/4 MPT_ straight (Brass) 12B-112	1
2	source locally	N/A	O-ring 12 1-1/16-12 to 12 MPT 3/4-14 6401-12-12-O	1
3	23447	1	FILTER, HYDRAC HYCON ASSEMBLY	1
4	source locally	N/A	Male JIC 08, 3/4-16 to male O-ring 08 3/4-16 6801-08-08-O	1
5	42104RP	1	OIL RESERVOIR Made to order, does not include components	1
6	23533	1	OIL-LEVEL INDICATOR, 5 C-C 6-5/8 H	1
7	45141	1	Wheel, 10 x 2-3/4 x 5/8	4
8	17171	1	FUEL CAP, BLACK TETHERED, EPA COMPIANT	1
9	46113	1	FUEL GAUGE, 8 1/2	1
10	46213	1	VIBRATION-DAMPING MOUNT, 1/4-20 NEOPRENE	1
11	23445	1	THERMAL TRANSFER COOLER, AIR-COOLED	1

Merit, An ICS Brand
4909 SE International Way
Portland, OR 97222
800.321.1240
icsdiamondtools.com